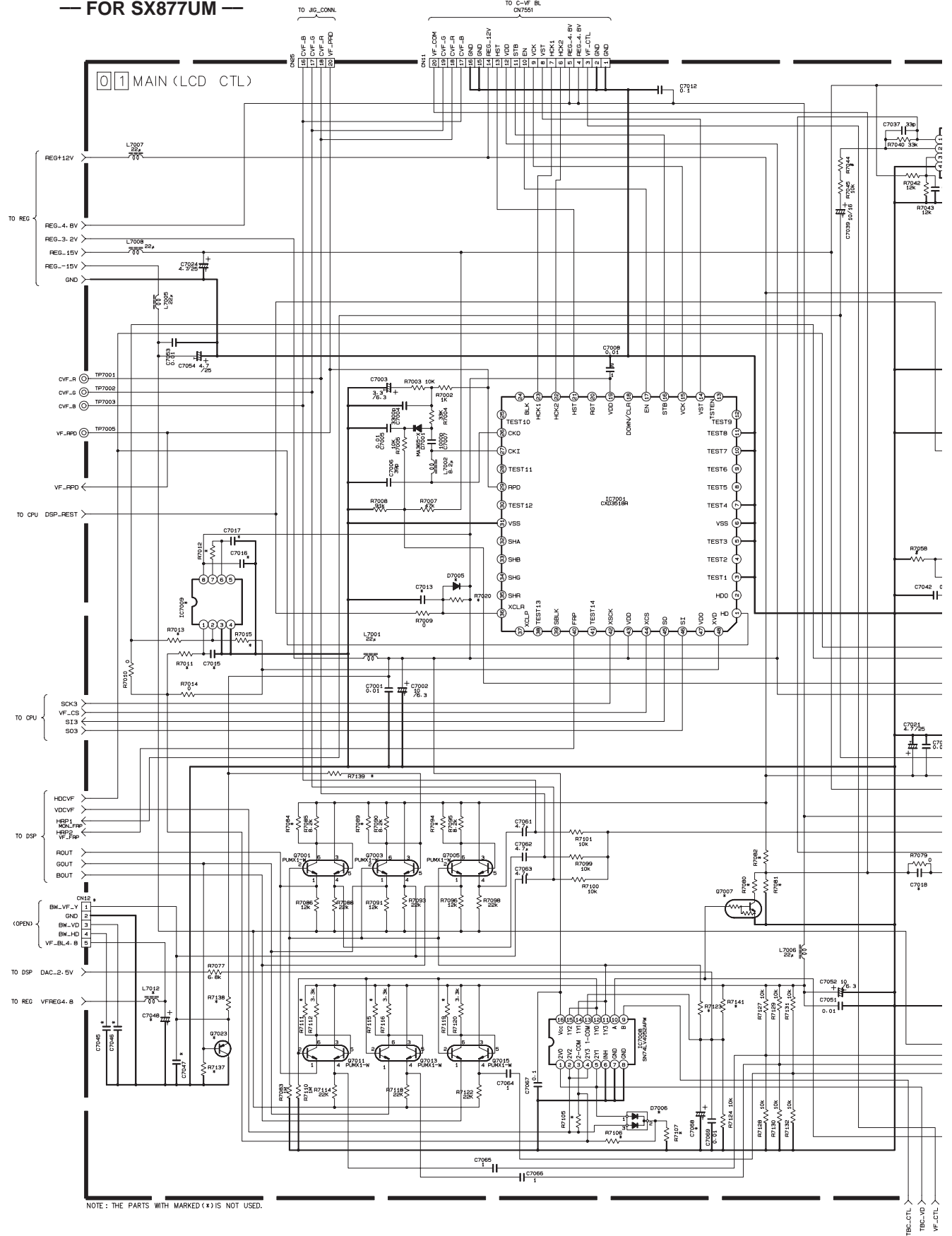


# SECTION 4 CHARTS AND DIAGRAM

## 4.1 LCD CTL SCHEMATIC DIAGRAM

— FOR SX877UM —



5

4

3

2

1

4-1

A

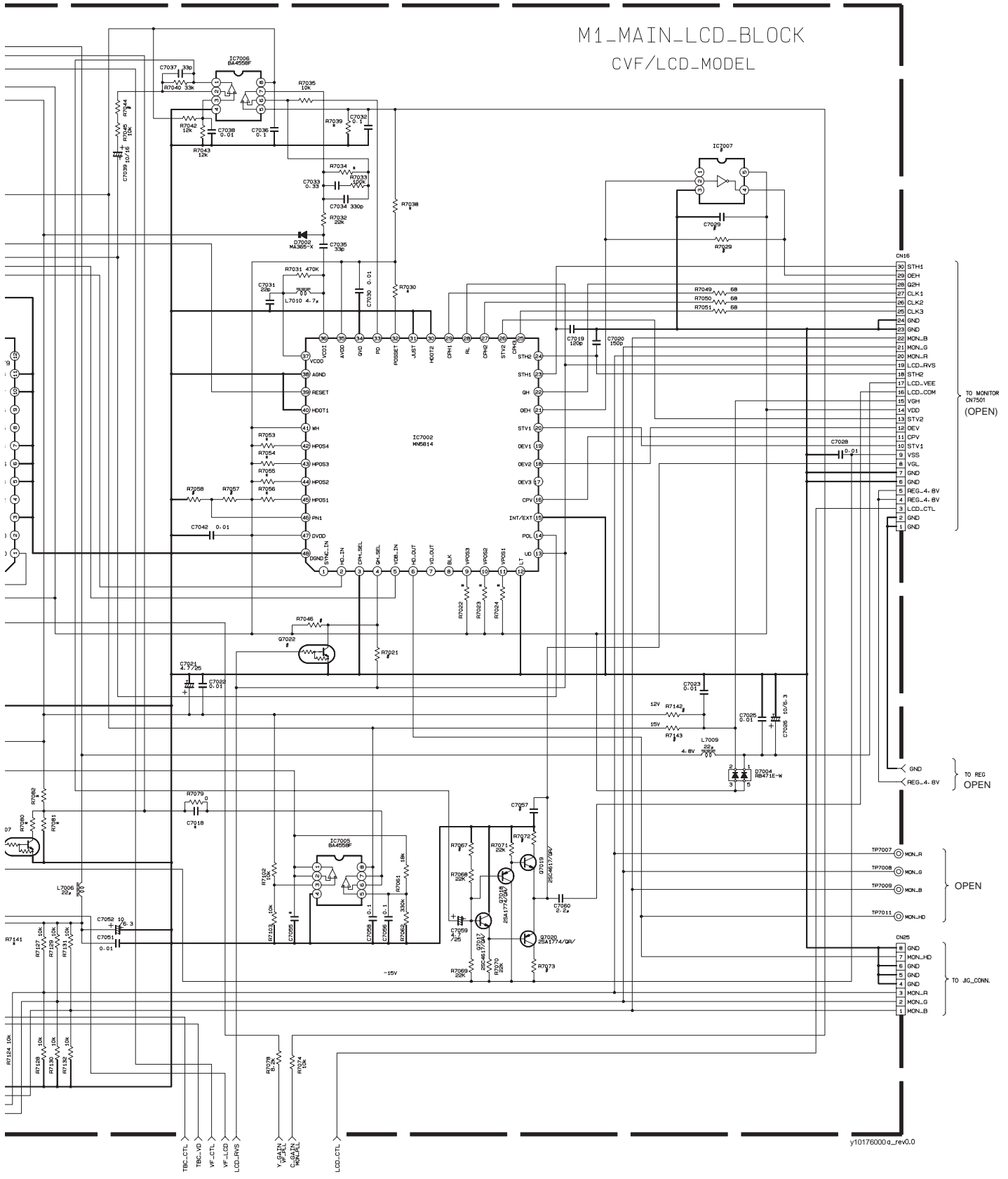
B

C

D

TBC-CTL  
TBC-V0  
VF-CTL

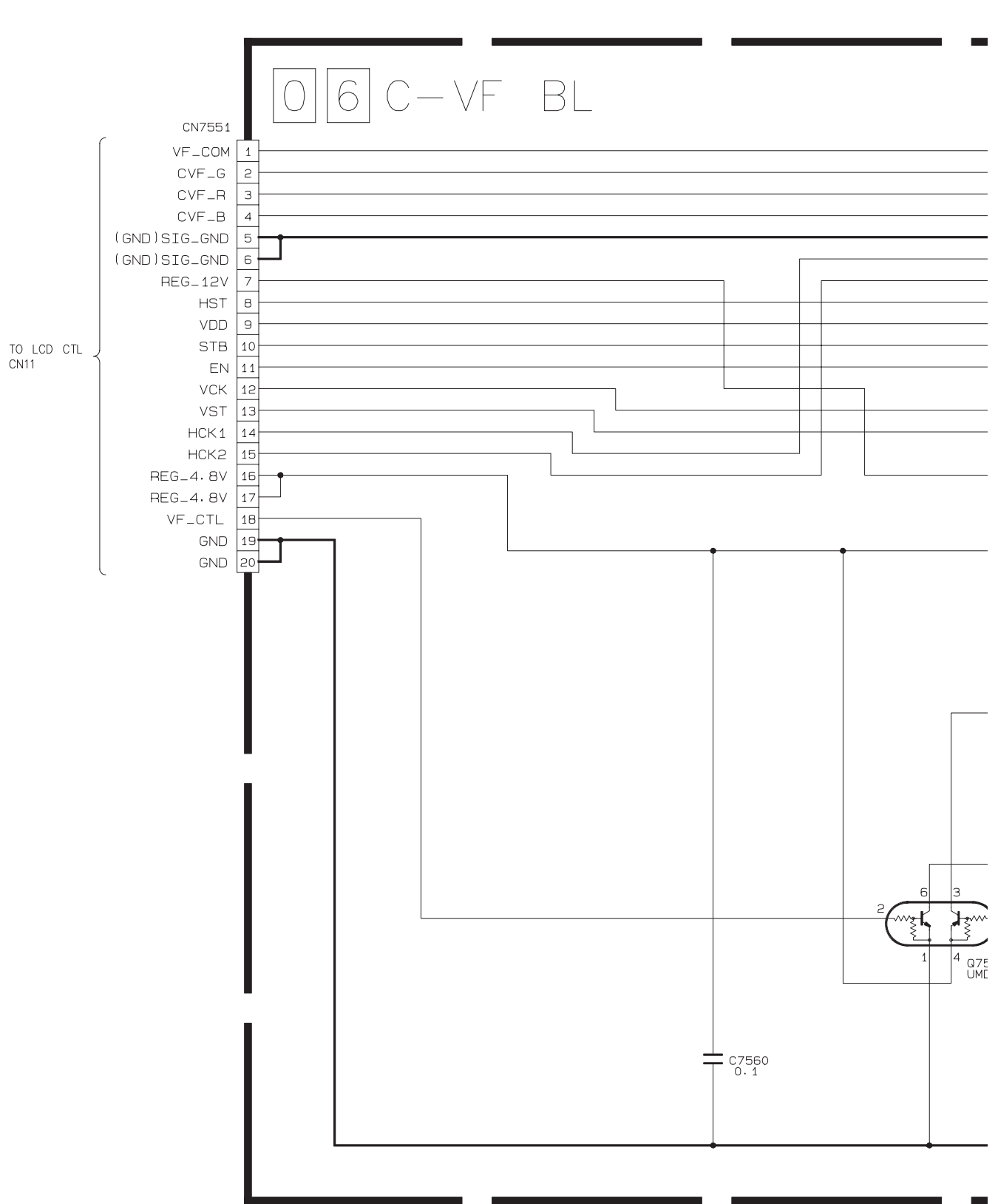
**NOTE :** • For the destination of each signal and further line connections that are cut off from this diagram, refer to “4.1 BOARD INTERCONNECTIONS”  
 • When ordering parts, be sure to order according to the Part Number indicated in the Parts List.



y10176000\_c\_rev.0.0

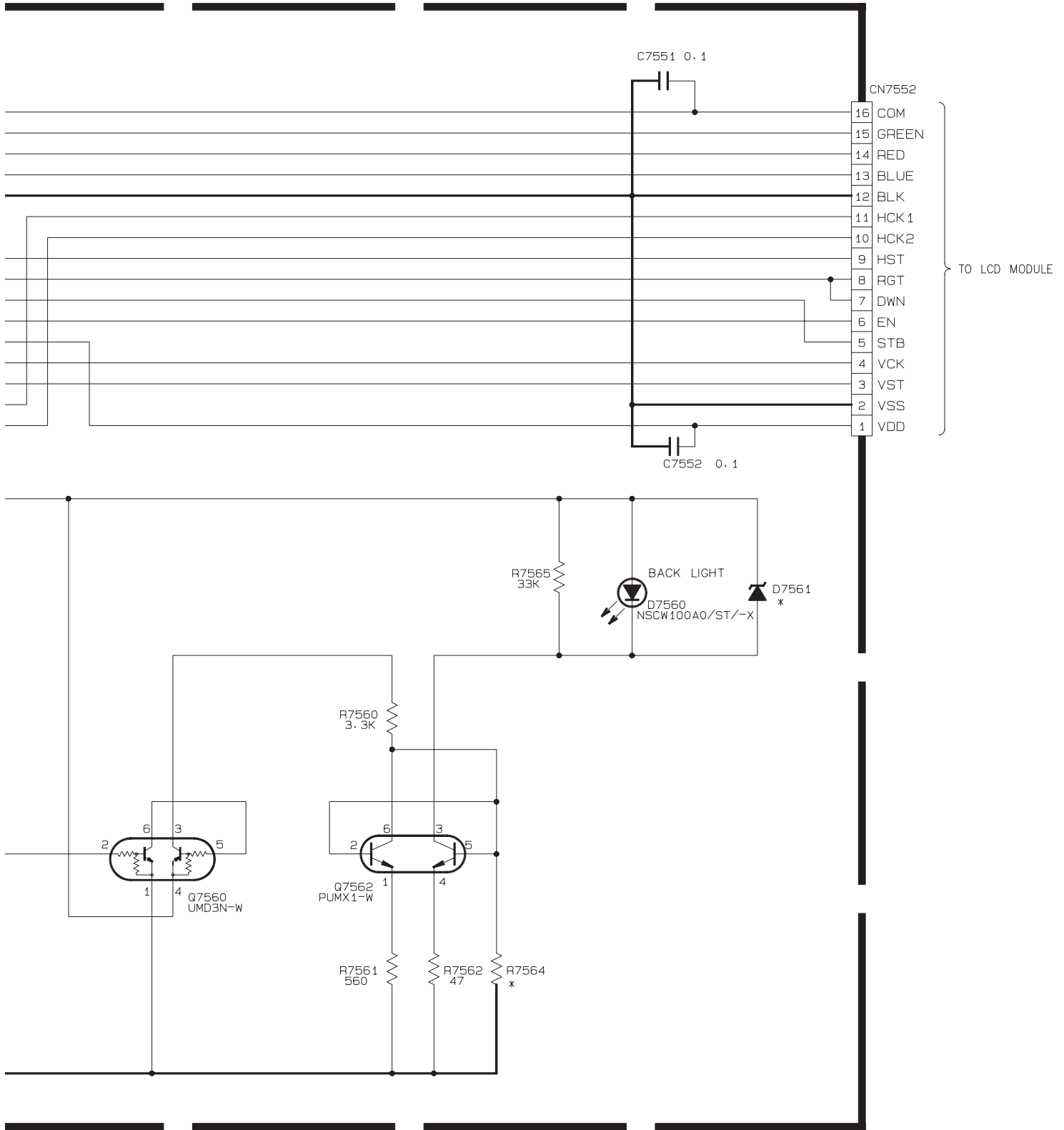
## 4.2 C-VF BL SENSOR SCHEMATIC DIAGRAM

— FOR SX877UM —



NOTE : THE PARTS WITH MARKED (\*) IS NOT USED.

**NOTE :** • For the destination of each signal and further line connections that are cut off from this diagram, refer to “4.1 BOARD INTERCONNECTIONS”  
 • When ordering parts, be sure to order according to the Part Number indicated in the Parts List.

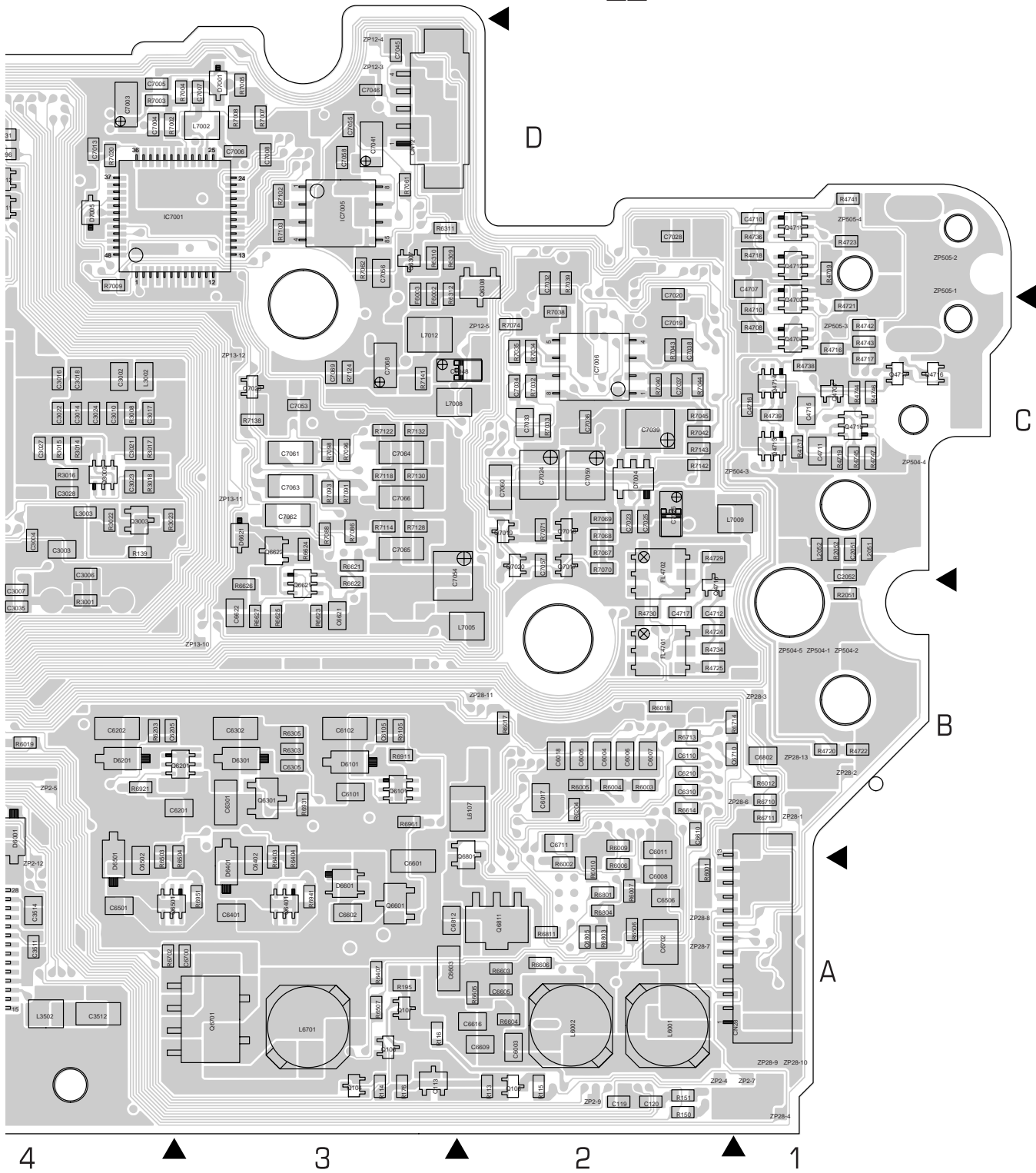


y30114-001a\_rev0.0



FOIL SIDE (B)

01 MAIN PWB YB10310-01-03



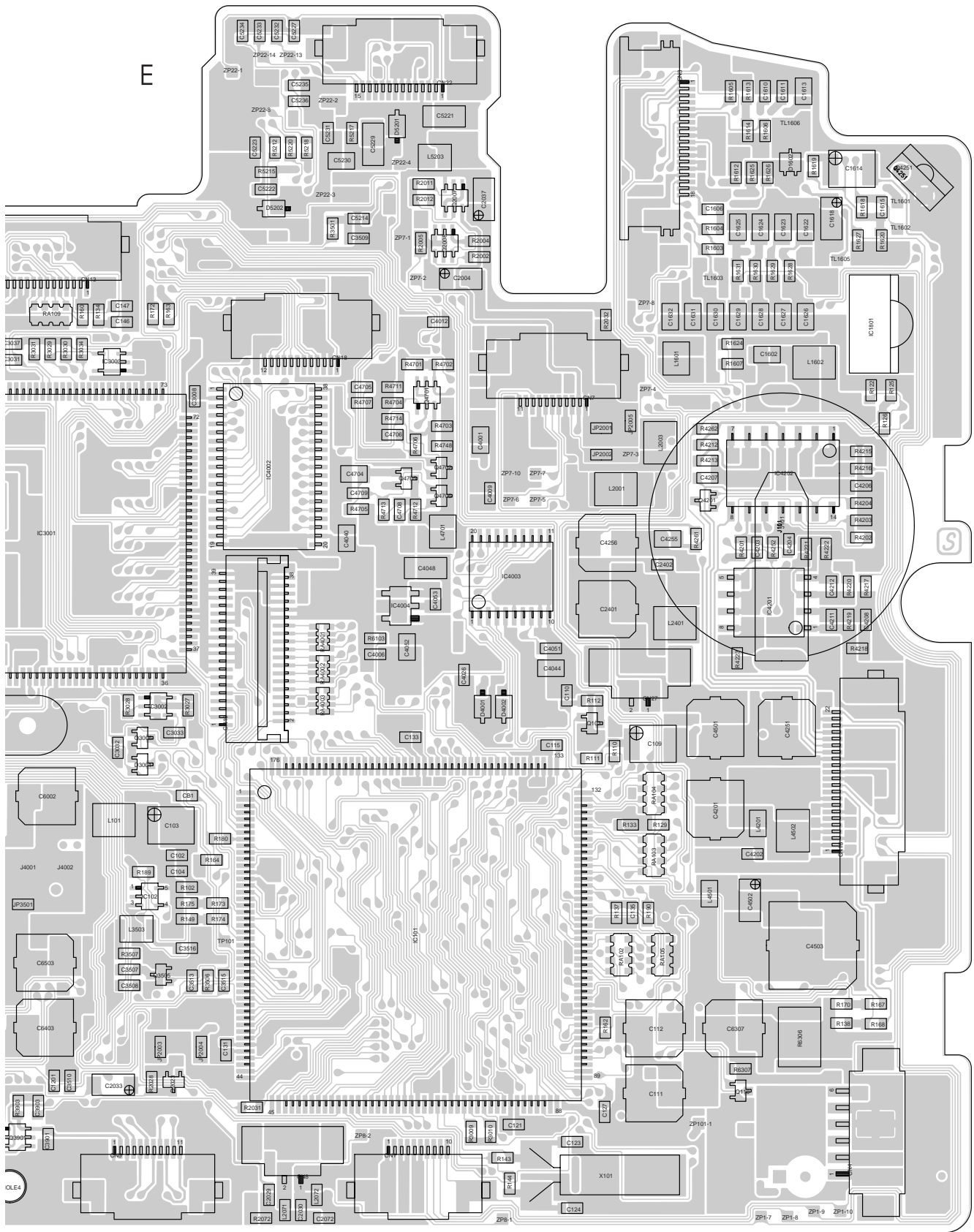


COMPONENT PARTS LOCATION GUIDE <MAIN > YB10310-01-03

REF.NO.	LOCATION	REF.NO.	LOCATION	REF.NO.	LOCATION	REF.NO.	LOCATION	REF.NO.	LOCATION	REF.NO.	LOCATION	REF.NO.	LOCATION	
<b>RESISTOR</b>		R3006	A C 3C	R4711	A C 5D	R6605	B C 2A	R7083	A C 3C	JP2005	A C 6D	ZP7-3	A C 6C	
R151	B C 2A	R3007	A C 3C	R4712	A C 5C	R6606	B C 2A	R7084	A C 3C	JP3501	A C 4B	ZP7-4	A C 6D	
R152	B C 5D	R3008	B C 4C	R4713	A C 5C	R6607	A C 3A	R7085	A C 3C	PC0539	A C 7A	ZP7-5	A C 6C	
R153	B C 6B	R3009	A C 6A	R4714	A C 5D	R6608	A C 3A	R7086	B C 3C	PC0559	A C 7A	ZP7-6	A C 6C	
R158	B C 6A	R3010	A C 6A	R4715	A C 2D	R6609	A C 3A	R7088	B C 3C	PC0573	A C 4A	ZP7-7	A C 6C	
R159	A C 2C	R3014	B C 4C	R4716	B C 1C	R6610	A C 3A	R7089	A C 3C	TL1601	A C 7D	ZP7-8	A C 6D	
R160	A C 4D	R3015	B C 4C	R4717	B C 1C	R6611	A C 3A	R7090	A C 3C	TL1602	A C 7D	ZP7-9	A C 6C	
R1601	B C 7D	R3016	B C 4C	R4718	B C 1D	R6612	A C 3A	R7091	B C 3C	TL1603	A C 7D	ZP8-1	A C 6A	
R1602	B C 7D	R3017	B C 4C	R4719	B C 1C	R6613	A C 2A	R7093	B C 3C	TL1605	A C 7D	ZP8-2	A C 5A	
R1603	A C 7D	R3018	B C 4C	R4720	B C 1B	R6614	A C 2B	R7094	A C 3C	TL1606	A C 7E			
R1604	A C 7D	R3022	B C 4C	R4721	B C 1C	R6616	A C 3A	R7095	A C 3C	TM1	A C 1A			
R1605	A C 7E	R3023	B C 4C	R4722	B C 1B	R6621	B C 3C	R7096	B C 3C	TM2	A C 1A			
R1606	A C 7E	R3027	A C 5B	R4723	B C 1D	R6622	B C 3B	R7098	B C 3C	TM4	A C 7A			
R1607	A C 7D	R3028	A C 4B	R4724	B C 2B	R6623	B C 3B	R7099	A C 3D	TM5	A C 7A			
R1608	B C 6E	R3029	A C 4D	R4725	B C 2B	R6624	B C 3C	R7100	A C 3D	X101	A C 6A			
R1609	B C 6E	R3030	A C 4D	R4726	A C 2B	R6625	B C 3B	R7101	A C 3D	X102	A C 7A			
R161	B C 4B	R3031	A C 4D	R4727	A C 1C	R6626	B C 3B	R7102	B C 3D	X3001	A D 4B			
R1610	B C 6E	R3034	A C 4D	R4728	A C 2B	R6627	B C 3B	R7103	B C 3D	ZP101-1	A C 6A			
R1611	B C 6E	R3038	A C 3C	R4729	B C 2C	R6701	A C 3A	R7110	A C 3C	ZP1-1	A B C 7D			
R1612	A C 7D	R3501	A C 5D	R4730	B C 2B	R6702	B C 4A	R7111	A C 3C	ZP1-10	A C 7A			
R1613	A C 7E	R3502	A C 4A	R4731	A C 2B	R6703	A C 2A	R7112	A C 3C	ZP11-14	A C 3D			
R1614	A C 7E	R3504	B C 5A	R4732	A C 1B	R6704	A C 2A	R7114	B C 3C	ZP12-1	A C 3C			
R1615	B C 7E	R3505	B C 5A	R4733	A C 2C	R6706	A C 2A	R7115	A C 3C	ZP12-3	A B C 3D			
R1616	B C 7E	R3506	A C 5A	R4734	B C 2B	R6707	A C 3A	R7116	A C 3C	ZP12-4	B B C 3D			
R1617	B C 7E	R3507	A C 4B	R4735	A C 1D	R6708	A C 3A	R7118	B C 3C	ZP12-5	B C C 2C			
R1618	A C 7D	R3508	A C 4A	R4736	B C 1D	R6709	A C 3A	R7119	A C 3C	ZP1-3	B B C 5A			
R1619	A C 7E	R3901	A C 4A	R4737	B C 1C	R6710	B C 1B	R7120	A C 3C	ZP13-10	A C 3B			
R162	A C 6A	R3902	A C 4A	R4738	B C 1C	R6711	B C 1B	R7122	B C 3C	ZP13-11	B B C 3C			
R1620	A C 7D	R3903	A C 4A	R4739	B C 1C	R6712	A C 3A	R7123	A C 3C	ZP13-12	B B C 3C			
R1621	B C 7D	R4001	B C 6C	R4741	B C 1D	R6713	B C 2B	R7124	B C 3C	ZP13-5	B B C 6B			
R1622	B C 7D	R4002	B C 6C	R4742	B C 1C	R6714	B C 2B	R7127	A C 3C	ZP1-5	B B C 7D			
R1623	B C 7D	R4003	B C 6C	R4743	B C 1C	R6801	B C 2A	R7128	B C 3C	ZP16-10	B B C 6B			
R1624	A C 7D	R4004	B C 6C	R4744	B C 1C	R6803	B C 2A	R7129	A C 3C	ZP16-7	B B C 6B			
R1625	A C 7D	R4006	B C 6C	R4745	B C 1C	R6804	B C 2A	R7130	B C 3C	ZP1-7	A C 7A			
R1626	A C 7D	R4007	B C 6D	R4746	B C 1C	R6810	A C 2B	R7131	A C 3C	ZP1-8	A C 7A			
R1627	A C 7D	R4008	B C 6D	R4747	B C 1C	R6811	B C 2A	R7132	B C 3C	ZP18-10	A B C 6A			
R1628	A C 7D	R4009	B C 6D	R4748	A C 6A	R6813	A C 2A	R7137	A C 3C	ZP18-3	B B C 4B			
R1629	A C 7D	R4010	B C 6D	R504	A C 1A	R6814	A C 2A	R7138	B C 3C	ZP18-4	B B C 6B			
R163	A C 4D	R4035	B C 6C	R505	A C 1A	R6820	A C 2B	R7139	A C 3C	ZP1-9	A C 7A			
R1630	A C 7D	R4036	B C 6C	R5201	B C 6E	R6911	B C 3B	R7141	B C 3C	ZP2-1	B B C 6B			
R1631	A C 7D	R4037	B C 6B	R5202	B C 5E	R6921	B C 4B	R7142	B C 2C	ZP2-10	B B C 6B			
R1632	B C 7D	R4038	B C 4B	R5203	A C 3C	R6931	B C 3B	R7143	B C 2C	ZP2-11	B B C 6B			
R1633	B C 7D	R4201	A C 7C	R5204	A C 3B	R6941	B C 3A	R7201	A C 3D	ZP2-12	B B C 4A			
R164	A C 5B	R4202	A C 7C	R5211	B C 6E	R6951	B C 3A	R7202	A C 3D	ZP2-14	B B C 6A			
R165	B C 7C	R4203	A C 7C	R5212	A C 5E	R6961	B C 3B	R7203	A C 3D	ZP2-2	B B C 6A			
R166	B C 7C	R4204	A C 7C	R5213	B C 5D	R7002	B C 4D	R7204	A C 3D	ZP22-1	A C 5E			
R167	A C 7A	R4205	B C 7C	R5214	B C 5D	R7003	B C 4D	R7205	A C 3D	ZP22-10	B B C 5E			
R168	A C 7A	R4206	B C 7C	R5215	A C 5D	R7004	B C 3D	R7206	A C 4D	ZP22-11	B B C 5E			
R169	B C 7A	R4207	B C 7C	R5216	B C 5E	R7005	B C 3D	R7207	A C 3D	ZP22-12	B B C 5E			
R170	A C 7A	R4208	B C 7C	R5217	A C 5E	R7007	B C 3D	R7208	A C 3D	ZP22-13	A C 5E			
R171	A C 6B	R4209	B C 7C	R5218	A C 5E	R7008	B C 3D	R7209	A C 3D	ZP22-14	A C 5E			
R172	A C 4D	R4210	B C 7C	R5220	A C 5E	R7009	B C 4D	R7210	A C 3D	ZP22-2	A C 5E			
R173	A C 5B	R4211	B C 7C	R6001	B C 2A	R7020	B C 4D	R7211	A C 3D	ZP22-3	A C 5D			
R174	A C 5B	R4212	A C 7C	R6002	B C 2A	R7021	A C 2C	R7212	A C 3D	ZP22-4	A C 5E			
R175	A C 5B	R4213	A C 7C	R6003	B C 2B	R7022	A C 2C	R7213	A C 2D	ZP22-5	B B C 5E			
R176	B C 3A	R4214	B C 7C	R6004	B C 2B	R7023	A C 2C	R7214	A C 2C	ZP22-8	A C 5E			
R177	B C 4B	R4215	A C 7C	R6005	B C 2B	R7024	A C 2C	R7215	A C 2C	ZP22-9	B B C 5E			
R180	A C 5B	R4216	A C 7C	R6006	B C 2A	R7029	A C 1C	R7216	A C 2C	ZP2-4	B B C 2A			
R182	B C 5A	R4217	A C 7C	R6007	B C 2A	R7030	A C 2C	R7217	A C 2C	ZP2-5	B B C 4B			
R183	B C 5A	R4218	A C 7C	R6008	A C 2A	R7031	A C 2C	RA101	B C 6A	ZP25-14	A C 4A			
R184	B C 4D	R4219	A C 7C	R6009	B C 2B	R7032	B C 2C	RA102	A C 6B	ZP25-5	A C 1B			
R188	B C 6A	R4220	A C 7C	R6010	B C 2A	R7033	B C 2C	RA103	A C 6B	ZP2-6	A C 1A			
R189	A C 4B	R4221	A C 7C	R6011	A C 2B	R7034	B C 2C	RA104	A C 6B	ZP2-7	B B C 1C			
R190	A C 6B	R4222	A C 7C	R6012	B C 1B	R7035	B C 2C	RA105	A C 6B	ZP27-1	B B C 6C			
R191	B C 6B	R4223	A C 7C	R6015	A C 1A	R7038	B C 2C	RA106	B C 6A	ZP27-2	B B C 6B			
R192	B C 4D	R4224	B C 7C	R6016	A C 1A	R7039	B C 2D	RA107	B C 6A	ZP2-8	A C 1A			
R195	B C 3A	R4251	B C 7C	R6017	B C 2B	R7040	B C 2C	RA108	B C 5A	ZP28-1	B B C 1B			
R196	B C 4D	R4252	A C 7C	R6018	B C 2B	R7042	B C 2C	RA109	A C 4D	ZP28-10	B B C 2A			
R2001	B C 6C	R4253	B C 7C	R6019	B C 4B	R7043	B C 2C	RA4001	A C 5C	ZP28-11	B B C 1B			
R2002	A C 6D	R4254	B C 7C	R6020	A C 2B	R7044	B C 2C	RA4002	A C 5C	ZP28-12	A C 1A			
R2003	B C 6C	R4255	B C 7C	R6021	A C 2B	R7045	B C 2C	RA4003	A C 5C	ZP28-13	A C 1B			
R2004	A C 6D	R4256	B C 7C	R6022	A C 2B	R7046	A C 2C			ZP28-2	B B C 1B			
R2005	A C 5D	R4257	B C 7C	R6023	A C 2B	R7049	A C 2C	<b>TEST POINT</b>			ZP28-3	B B C 1B		
R2006	B C 6C	R4258	B C 6C	R6103	A C 5C	R7050	A C 2C	TP101	A C 5B	ZP28-4	B B C 1A			
R2011	A C 5D	R4259	B C 6C	R6104	A C 3A	R7051	A C 2C	TP102	B C 6B	ZP28-5	B B C 6B			
R2012	A C 5D	R4261	A C 6C	R6105	B C 3B	R7053	A C 2C	TP7001	A C 3C	ZP28-6	B B C 1B			
R2021	B C 5A	R4262	A C 7D	R6203	B C 4B	R7054	A C 2C	TP7002	A C 3C	ZP28-7	B B C 2A			
R2022	B C 5A	R4501	B C 7B	R6204	B C 2B	R7055	A C 2C	TP7003	A C 2C	ZP28-8	B B C 2A			
R2023	B C 5A	R4502	B C 7B	R6303	B C 3B	R7056	A C 2C	TP7005	A C 2B	ZP28-9	B B C 1A			
R2024	B C 5A	R4503	B C 7B	R6304	A C 3B	R7057	A C 2C	TP7007	A C 2C	ZP2-9	B B C 2A			
R2025	B C 5A	R4504	B C 7B	R6305	B C 3B	R7058	A C 2C	TP7008	A C 2D	ZP4-1	B B C 7A			
R2026	B C 5A	R4505	B C 7B	R6306	A C 7A	R7061	B C 3D	TP7009	A C 2C	ZP4-2	B B C 7D			
R2027	B C 5A	R4506	B C 7B	R6307	A C 7A	R7062	B C 3D	TP7011	A C 2C	ZP4-5	B B C 7A			
R2028	A C 4A	R4507	B C 7B	R6309	B C 3D	R7067	B C 2C			ZP4-6	B B C 7A			
R2030	B C 5A	R4508	B C 7B	R6310	B C 3D	R7068	B C 2C	<b>OTHER</b>			ZP504-1	B B C 1B		
R2031	A C 5A	R4514	B C 7B	R6311	B C 3D	R7069	B C 2C	CB1	A C 5B	ZP504-2	B B C 1B			
R2032	A C 6D	R4515	B C 7B	R6312	B C 3D	R7070	B C 2C	FL4701	B C 2B	ZP504-3	A C 1C			
R2051	B C 1B	R4701	A C 5D	R6403	B C 3A	R7071	B C 2C	FL4702						







4

5

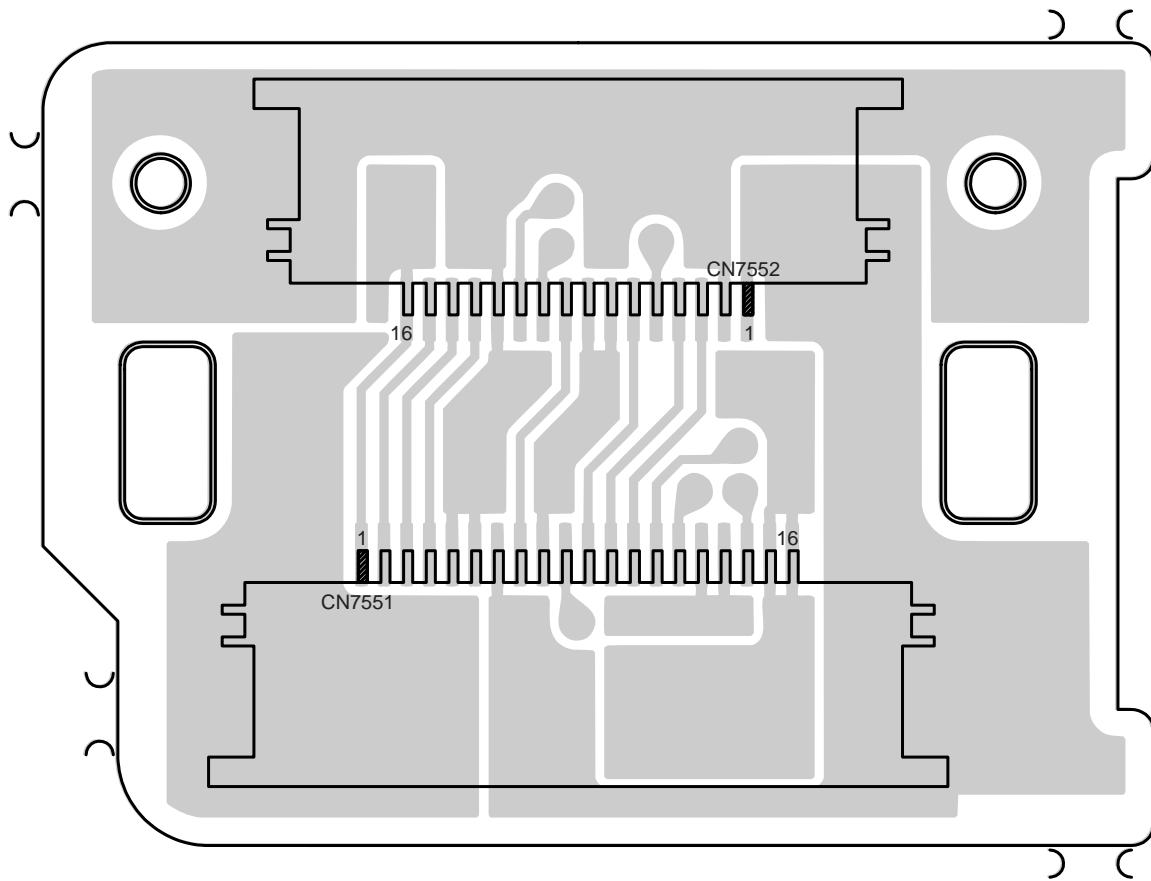
6

7

4.4 C-VF CIRCUIT BOARDS  
— FOR SX877UM —

06 C-VF BL YB20901

FOIL SIDE (B)



**COMPONENT SIDE (A)**

